

RAINBOW CANYONS AMATEUR RADIO CLUB

ARRL SPECIAL SERVICE CLUB

Website: www.netutah.com/rcarc

Issue 011

November 2002

Club night



Nominations

For the calendar year of 2003.

Here is your chance to speak your mind, voice an opinion, nominate your friend, or even be nominated your self!



Last months club night



The topic of the program for the RCARC meeting on October 15, 2002 was the principle of buoyancy along with some of its applications such as the Galileo thermometer.

Archimedes, an early Greek mathematician, physicist and engineer was one of the first people to understand this phenomenon. (An object in water experiences an upward force equal to the weight of the volume of water displaced

By the object) the water level of a small pond will drop if one in a little boat throws the anchor overboard.

Archimedes is purported to have to have been asked by the king to determine if the king's crown was pure gold. Use of specific gravity (the ratio of an object's density to the density of water can be found by dividing the weight of an object out of water by the difference of its weight out of water and in the water) Archimedes came to a solution in the bathtub and exclaimed "eureka!" meaning I've found it! Some objects of origin's and a peculiar paper airplane were on display following the program.

Travis Picket AC7MF

REPEATER TESTING
FOR DISTANCE

Monday morning, between 7:00 & 8:30 AM, Greg Dolgoff K7ZAR, Jeff KD7BCJ, and myself K7ZI, conducted a distance check on the 146.680 machine. I talked to Greg all the way down the I- 15 freeway *on 1 watt* and a

Treasurers report

August 2002

INCOME

Membership	\$0.00
Repeater	\$0.00

CHECKBOOK

General Fund	\$958.51
Hamfest Fund	\$1,622.07
Sub total	\$2,580.58

EXPENSES

News Letter	\$0.00
UP&L	\$5.95
Repeater	\$0.00

Checkbook bal	\$2,574.63
---------------	------------

¼ mag mount to the top of beaver summit and (get this) clear to I-70 turn off on 5 watts! Yes, there were places where they couldn't hear me. But the hills and flat stretches were very copyable with weakening signal the further north I got.

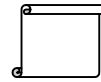
Jeff was headed north on SR 130 and we were able to talk clear to Minersville summit north side was spotty and no signal near Minersville town. We talked with each other as he neared Milford!

Had we had 25 or 50 watts out we could have worked the 146.680 even further!

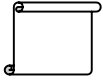
I was amazed at how well the

The 146.680 "hears". With the increase in output power I could hear the machine well beyond my talk range. Cudoo's to Greg and his fantastic machine!

Dick Parker K7ZI



Net controls for Nov



4th Monte
11th Larry
18 Joel
25 Clara

☺ REMINDER ☺

Club dues are due in January. \$20.00 for single members \$30.00 for family membership. Any memberships paid after January should be pro-rated for the balance of the year.

Pro-ratings

Single \$1.67 X months

Family \$2.50 X months

Example: lets say you are a single member and would like to pay your membership for the rest of the year, and you wanted to pay from February, you would just times the months left in the year by the amount \$1.67 X 11months and you would pay \$18.37 for the balance of the calendar year.

RCARC ECOM Training Net Preamble

5 minutes prior to net time

This is station (Your Call Sign) net control for the Rainbow Canyons ECOM Training Net. A net will be conducted on this frequency at 7:00 pm local time. All interested amateurs are invited to participate. : Please note; this net will be conducted using [SIMPLEX] or [REPEATER] mode. This is (Call sign) clear.

7:00pm.

Calling the Rainbow Canyons Emergency Communications Training Net. All interested amateurs are invited to participate. The cooperation of all amateurs on this frequency will be appreciated.

All participants be aware this frequency is designated the ECOM frequency and may be conducted in either simplex or repeater mode. Tonight, this net will conducted using [SIMPLEX] or [REPEATER] mode.

During an “actual emergency”, Gene Urie, N6Lha, will be the expected net control operator. Technical difficulties may render the repeater inoperative so be prepared to operate in simplex mode. 146.520 simplex should be kept open but monitored for any emergency traffic.

This is a directed net. Please transmit only as directed by net control. All stations checking in are requested to remain on frequency until excused by the net control operator.

Any emergency traffic will be acknowledged at any time with a “triple break”. Is there any emergency traffic at this time? *[Un-key mic and listen momentarily]*

When checking in please indicate if you have any announcements. Late, missed members or new check-ins will be called for following roll call. Training and announcements will be handled following toll call as well.

Roll call now follows. *[“Relays” should only be requested in SIMPLEX mode]*

[Following roll call]

I will now call for late, missed or new check-ins.

(Call Sign) please air your announcement now.

[If more than one station has announcements, call for them in order received]

Training now follows. (Call Sign) please air your training.

Thank you.

Final call for late, missed members or new check-ins, call now.

[Reminders]

The RCARC Club meeting is held on the 3rd Tuesday monthly at 7:30pm in the Enoch City office building located at 900 East Midvalley road.

Please remember to monitor frequency 146.520 52 minutes past each hour to the top of the hour for any emergency traffic and to assist travelers.

**This is net control station (Call Sign) closing this session of the RCARC ECOM net.
Following my report to the ECOM manager I will return this frequency to normal use.**

AC7MF, this is (Your Call). *[Your report information].*

**Thank to all for your patients and participation. This
is (Your Call). Out**

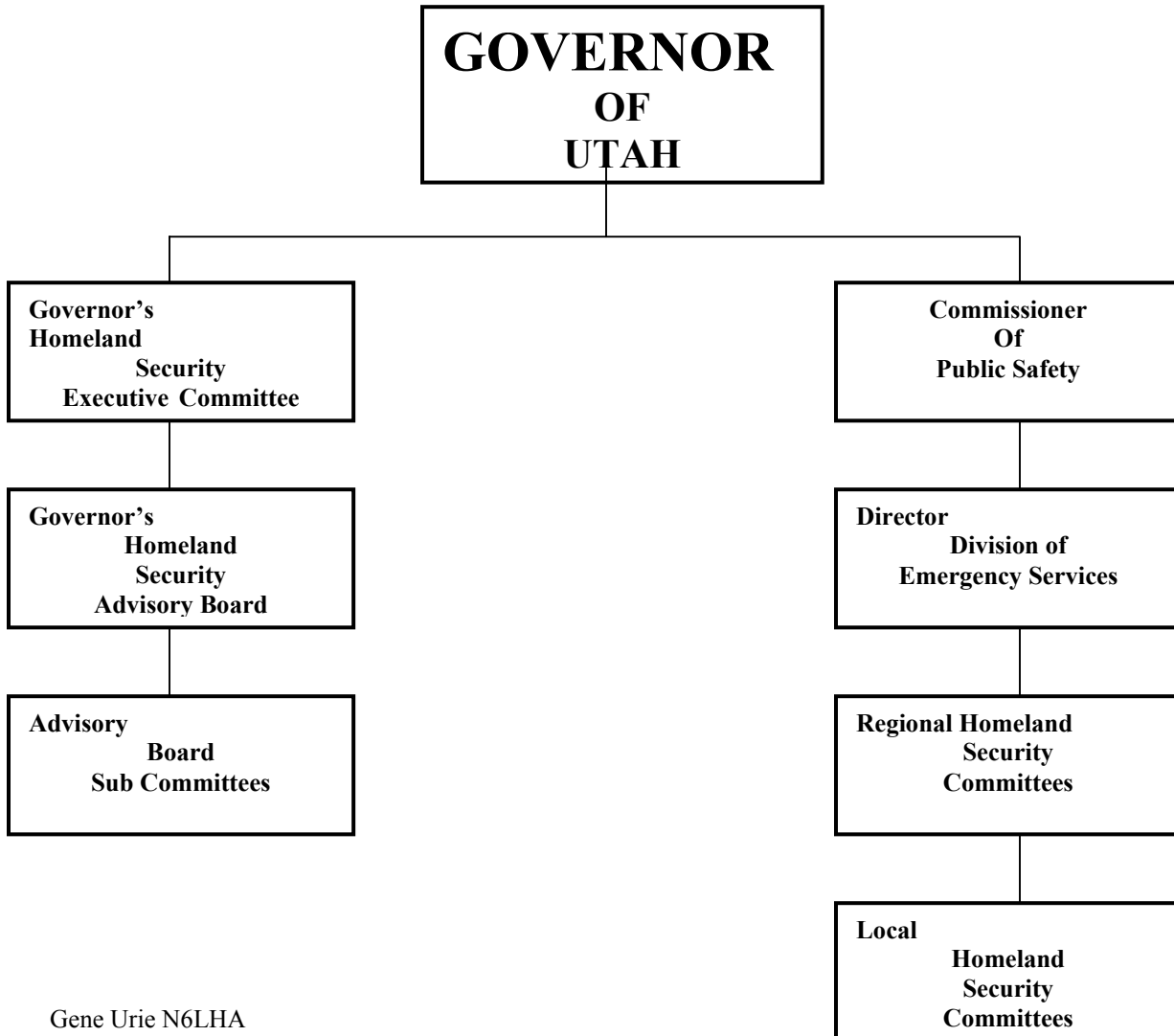
STATE OF UTAH HOMELAND SECURITY

The Sheriff's Local Emergency Planning Committee (LEPC) has now been changed to "Local Homeland Security Committee" (see chart).

All of the LEPC leaders were released and replaced by Homeland Security personnel. Those who were members of the Sheriff's emergency groups were retained as part of the new Local Homeland Security Committee.

Duties of the individual groups within the local committee will be covered in future meetings.

STATE OF UTAH HOMELAND SECURITY



MEMBERSHIP APPLICATION FORM

Name _____

Call Sign _____

Address _____

City _____ State ____ Zip _____

Telephone _____

Single Member 20.00 _____

Family Members 30.00 _____

**Submit check or money to RCARC for dues, and
mail to:**

Evelyn Curry

13961 W Pinto Rd

Cedar City, UT 84720

Note From the Editor

**If you would like some thing put into the newsletter, please send it to me via e-mail.
n7bo@starband.net**

**Thank You
73's DE N7BO Happy Hamming**